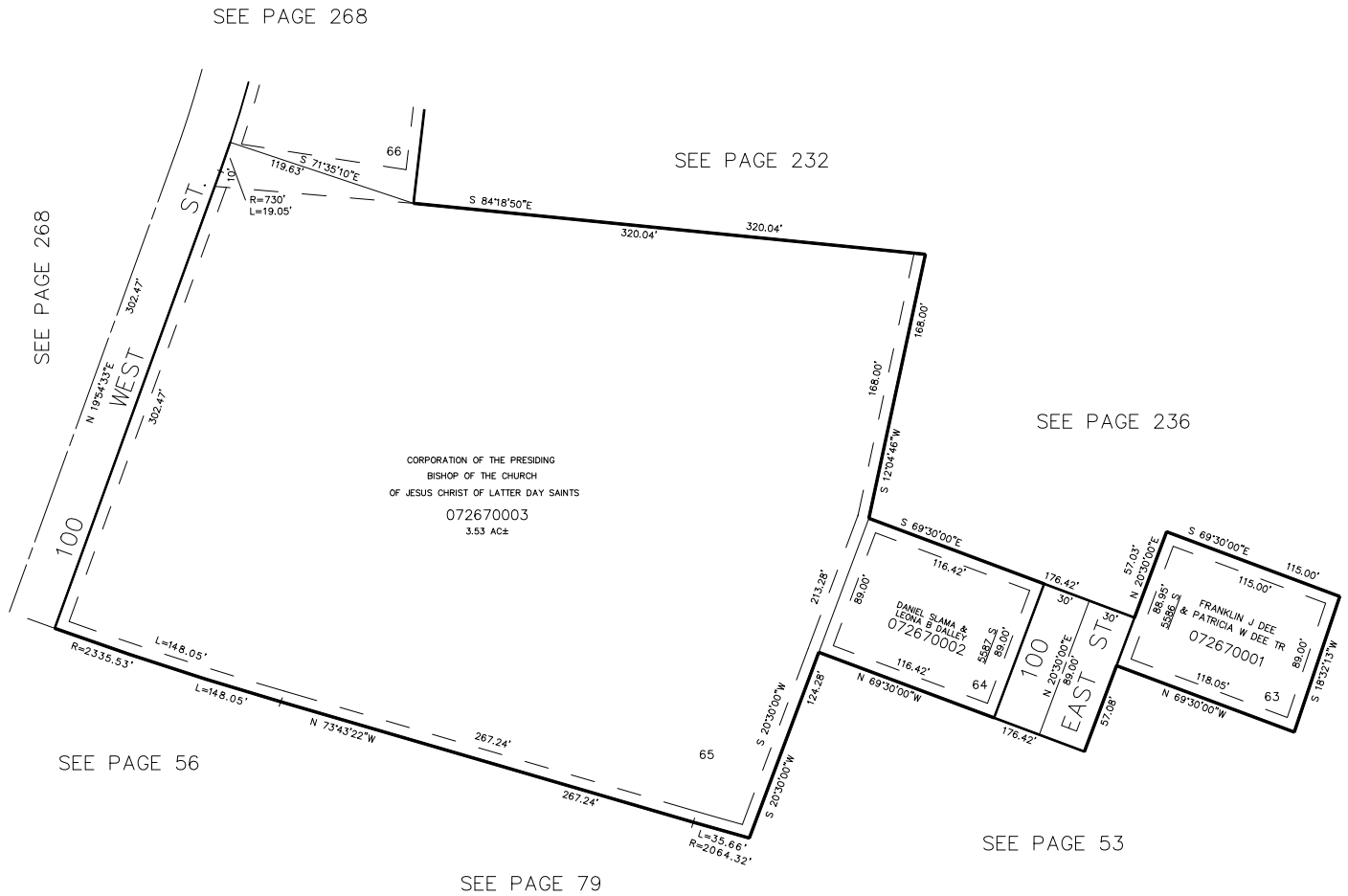


PART OF SEC. 17, T.5N., R.1W., S.L.B. & M.
RIDGELINE SUBDIVISION PHASE 4
 LOTS 63-65
 IN WASHINGTON TERRACE CITY
 SCALE 1"=60'

267

TAXING UNIT: 24



7' UTILITY & DRAINAGE EASEMENTS
 EACH SIDE OF PROPERTY LINES AS
 INDICATED BY DASHED LINES
 EXCEPT AS OTHERWISE SHOWN.

FOR COMPLETE ENG. DATA
 SEE ORIG. DED. PLAT IN
 BOOK 23, PAGE 57.